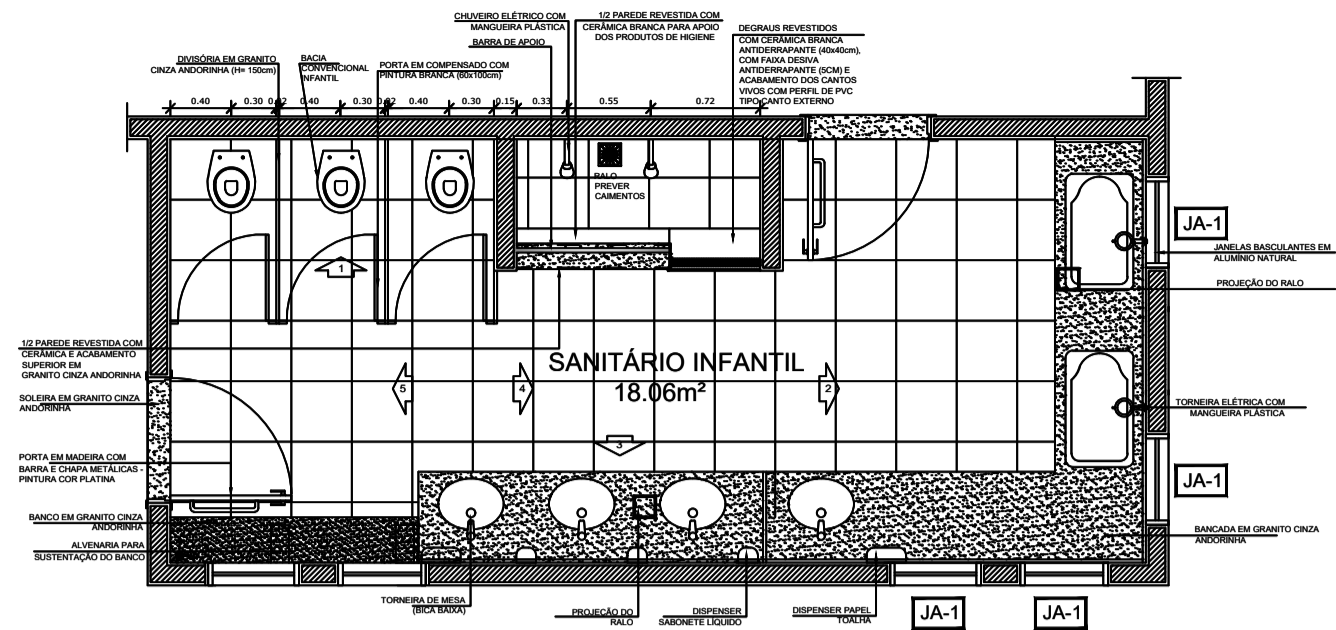
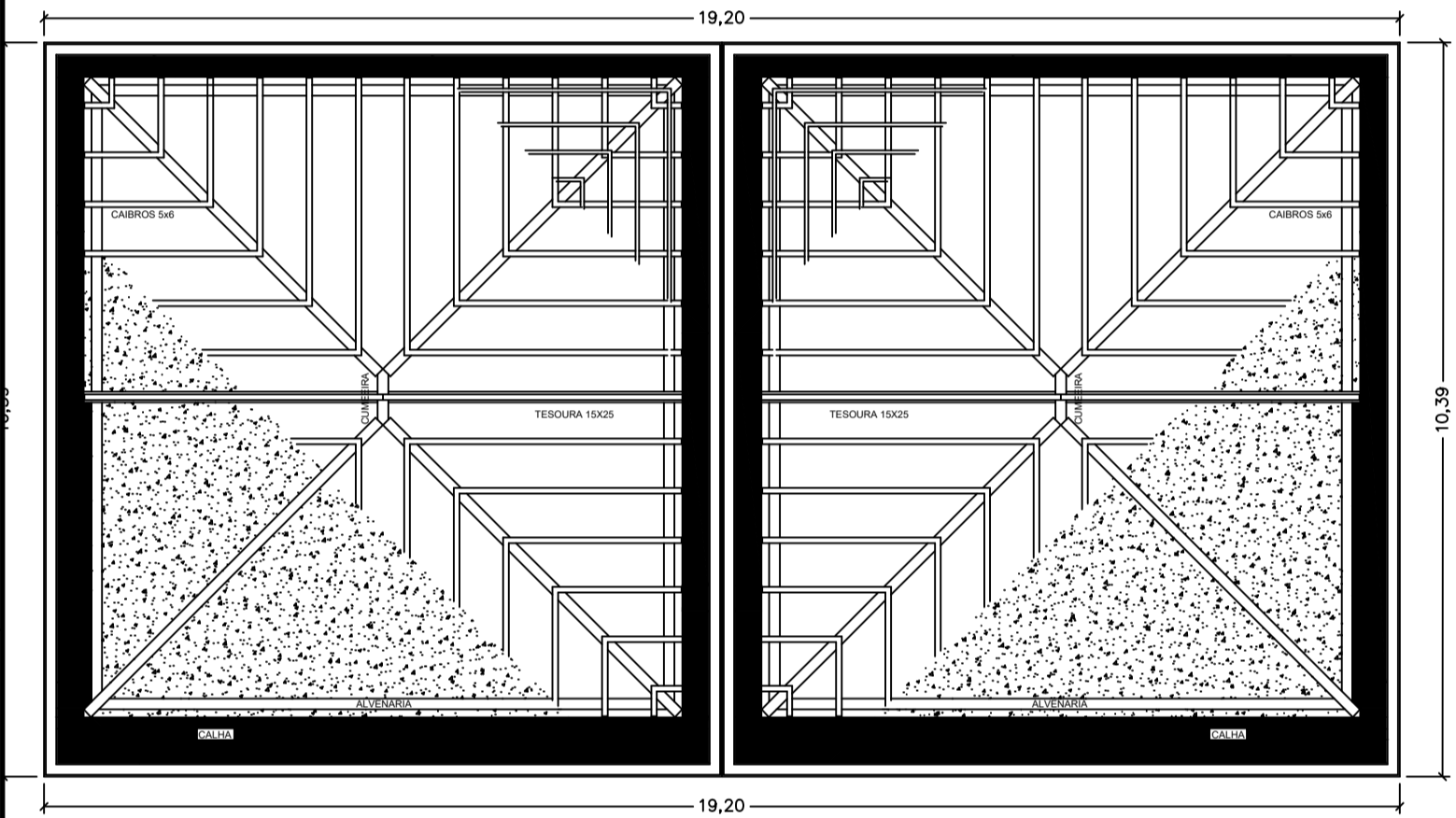


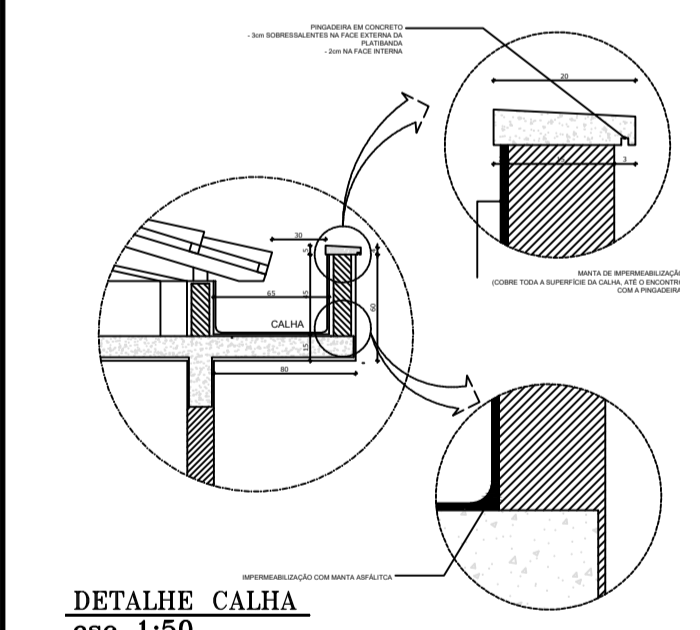
PLANTA BAIXA TÉRREO
esc 1:100



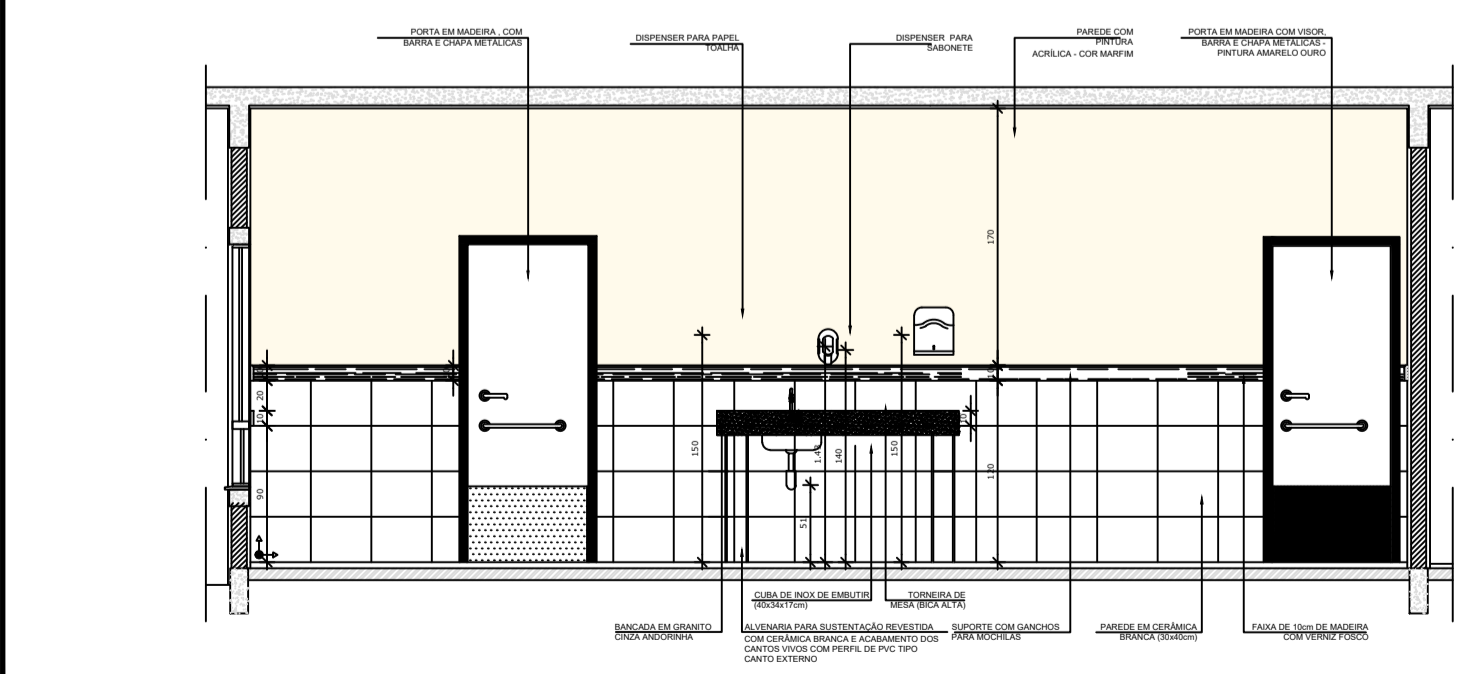
DETALHE 1
esc 1:50



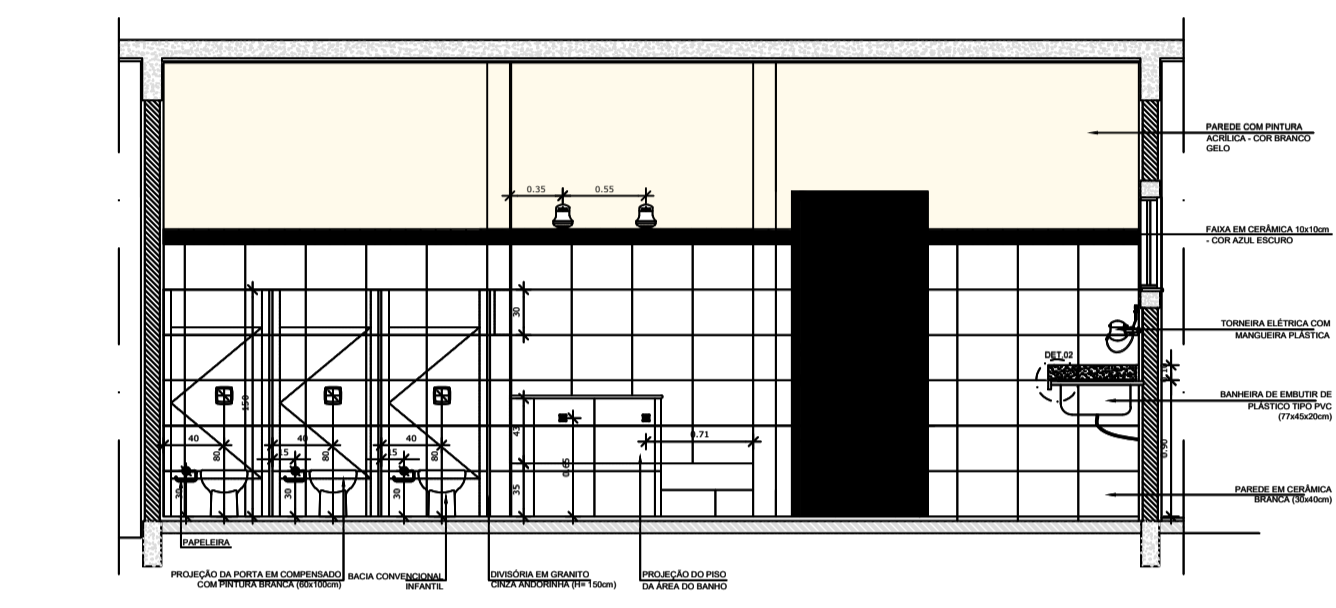
PLANTA COBERTURA
esc 1:100



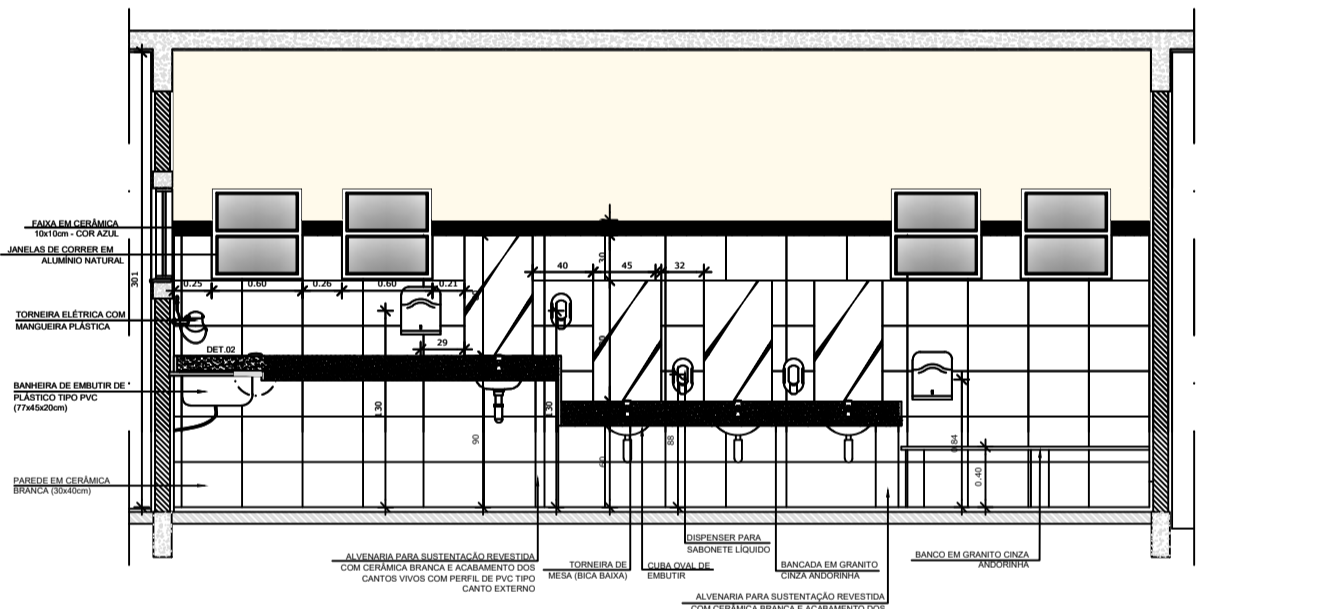
DETALHE CALHA
esc 1:50



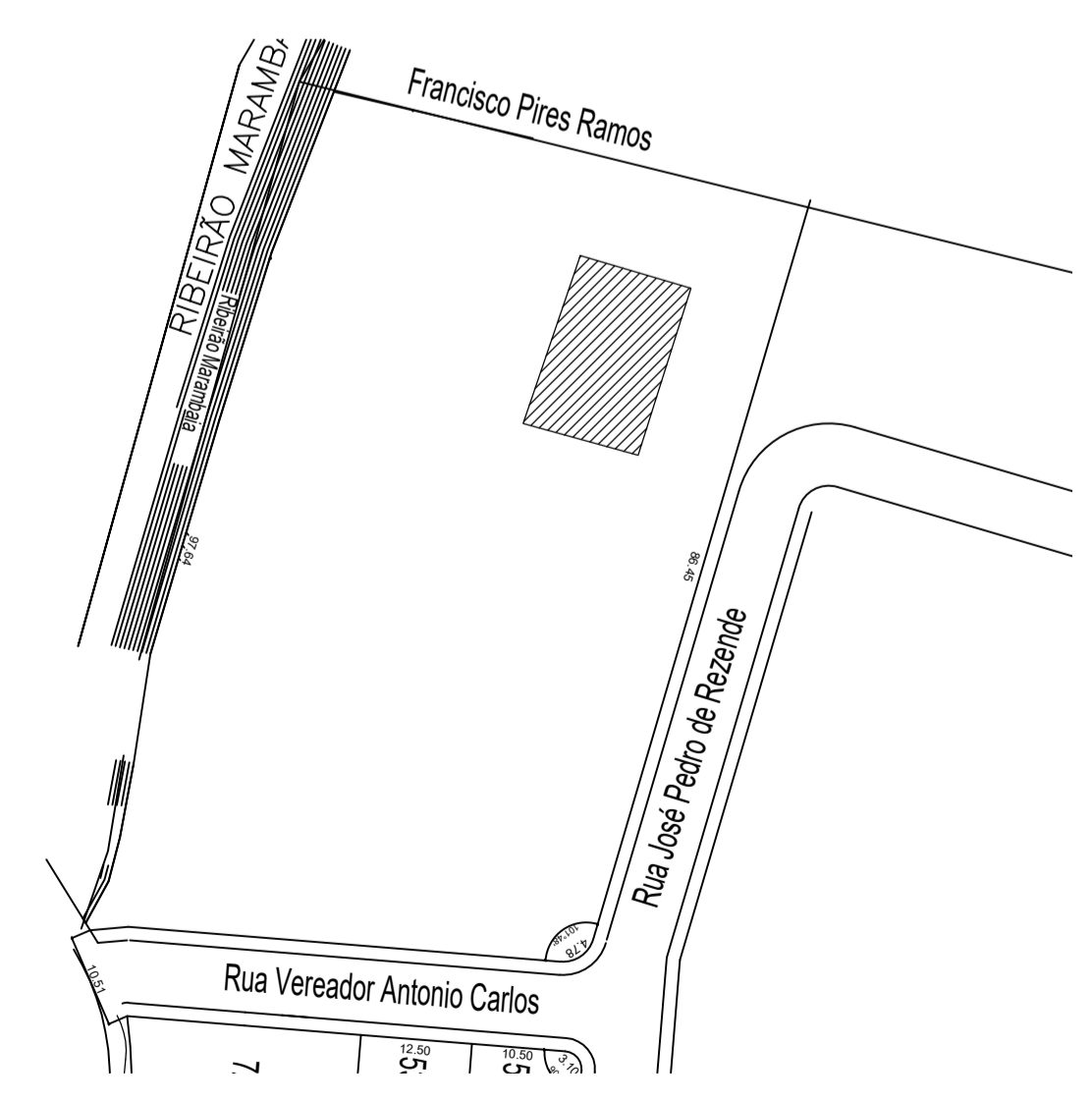
DETALHE 7
esc 1:50



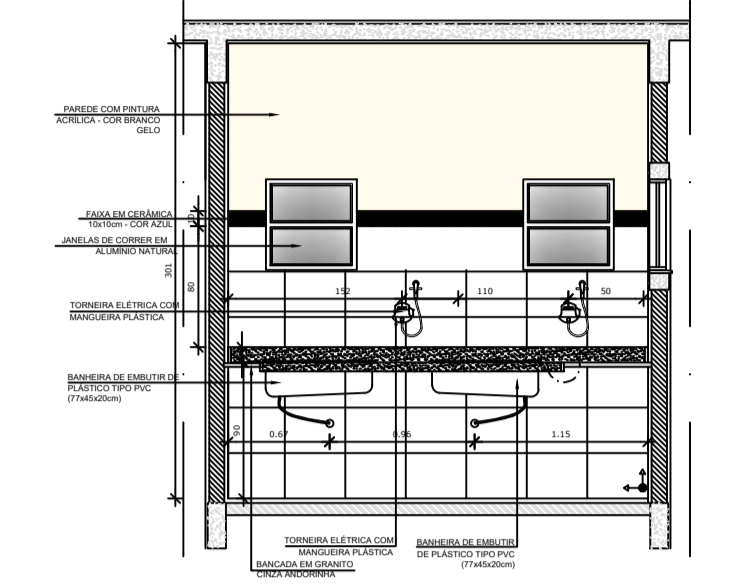
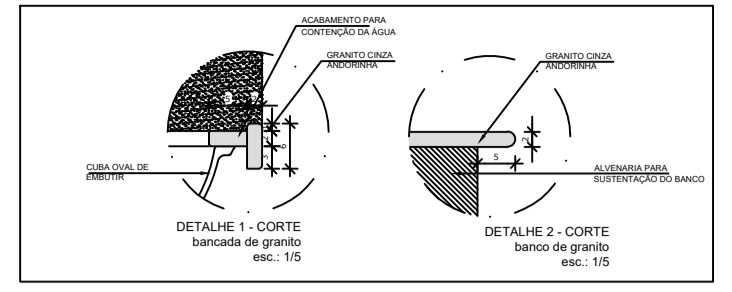
DETALHE 2
esc 1:50



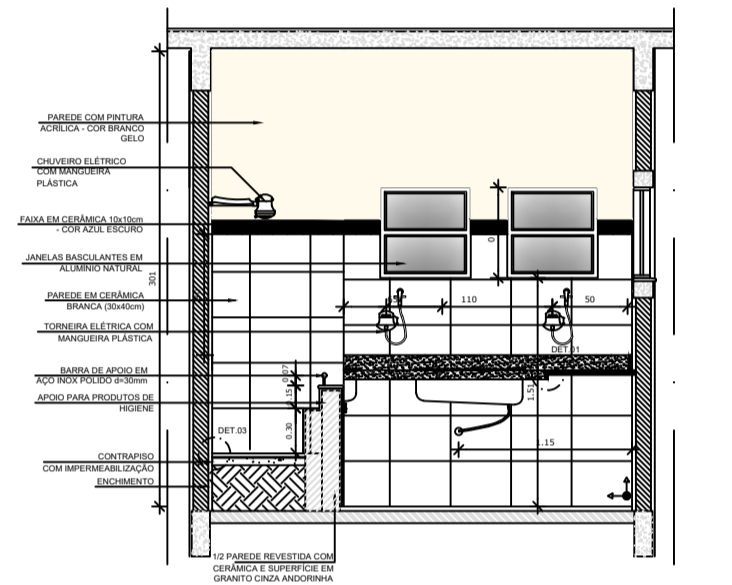
DETALHE 3
esc 1:50



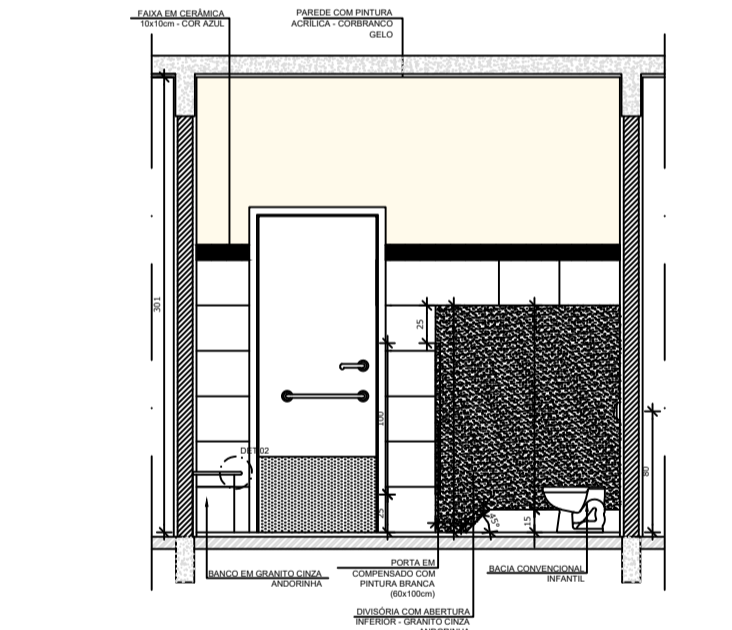
PLANTA LOCAÇÃO
esc 1:100



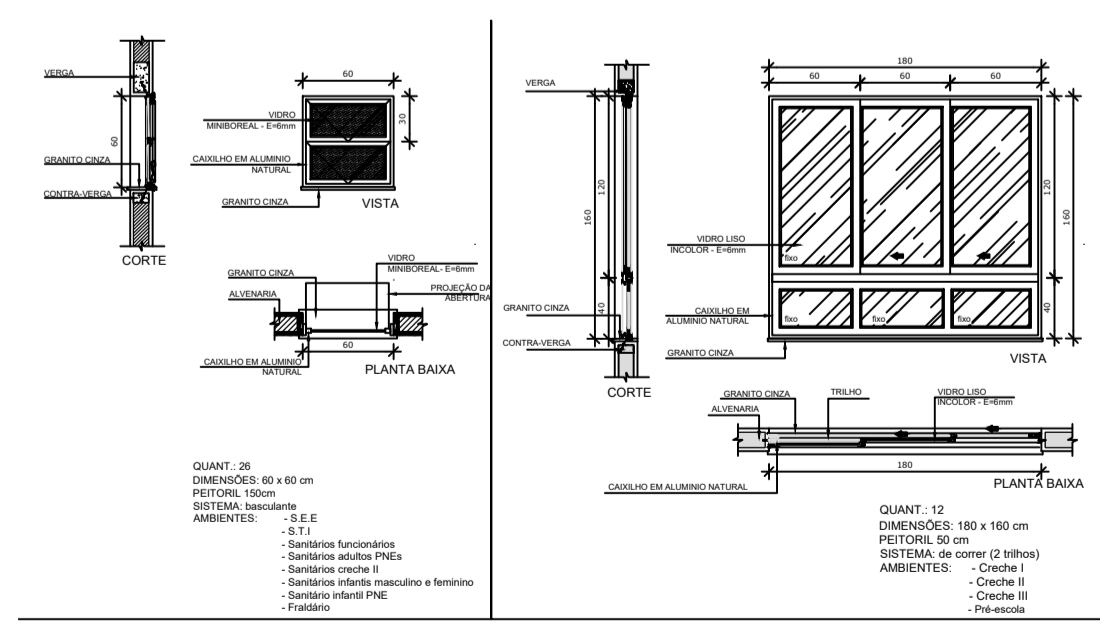
DETALHE 4
esc 1:50



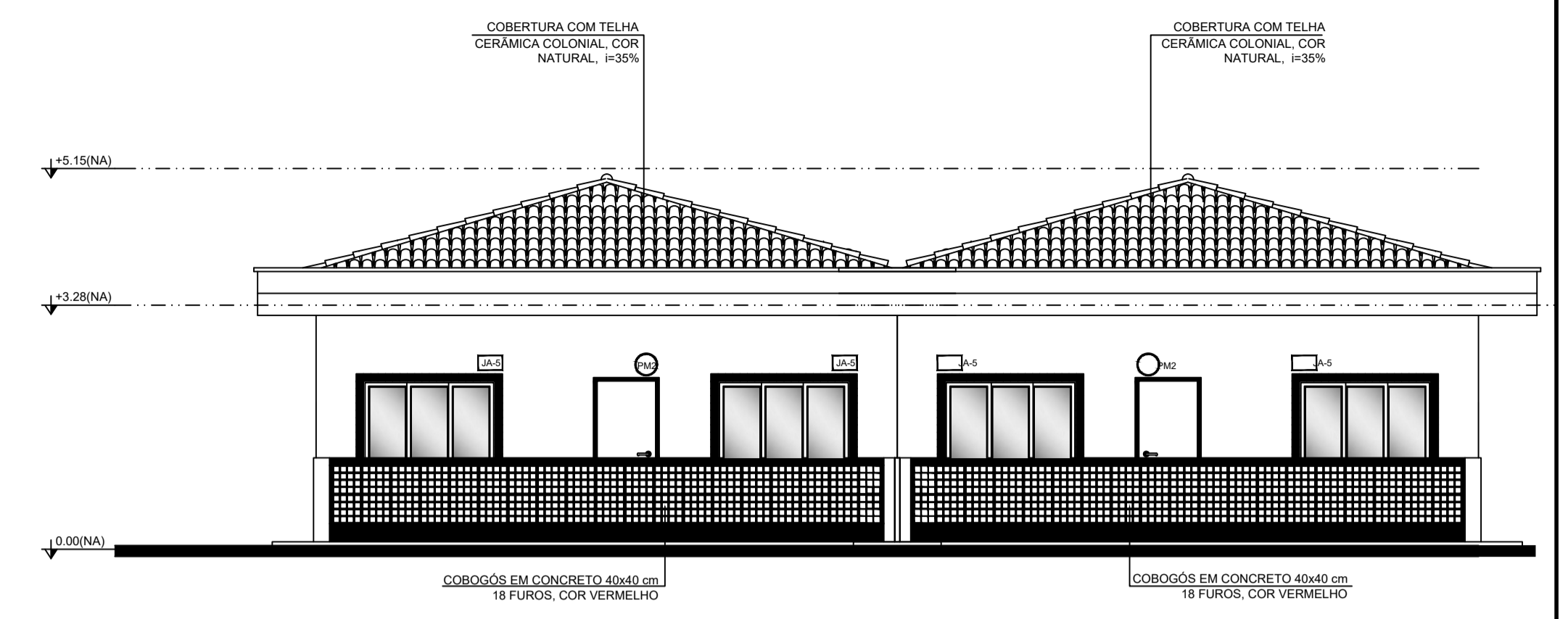
DETALHE 5
esc 1:50



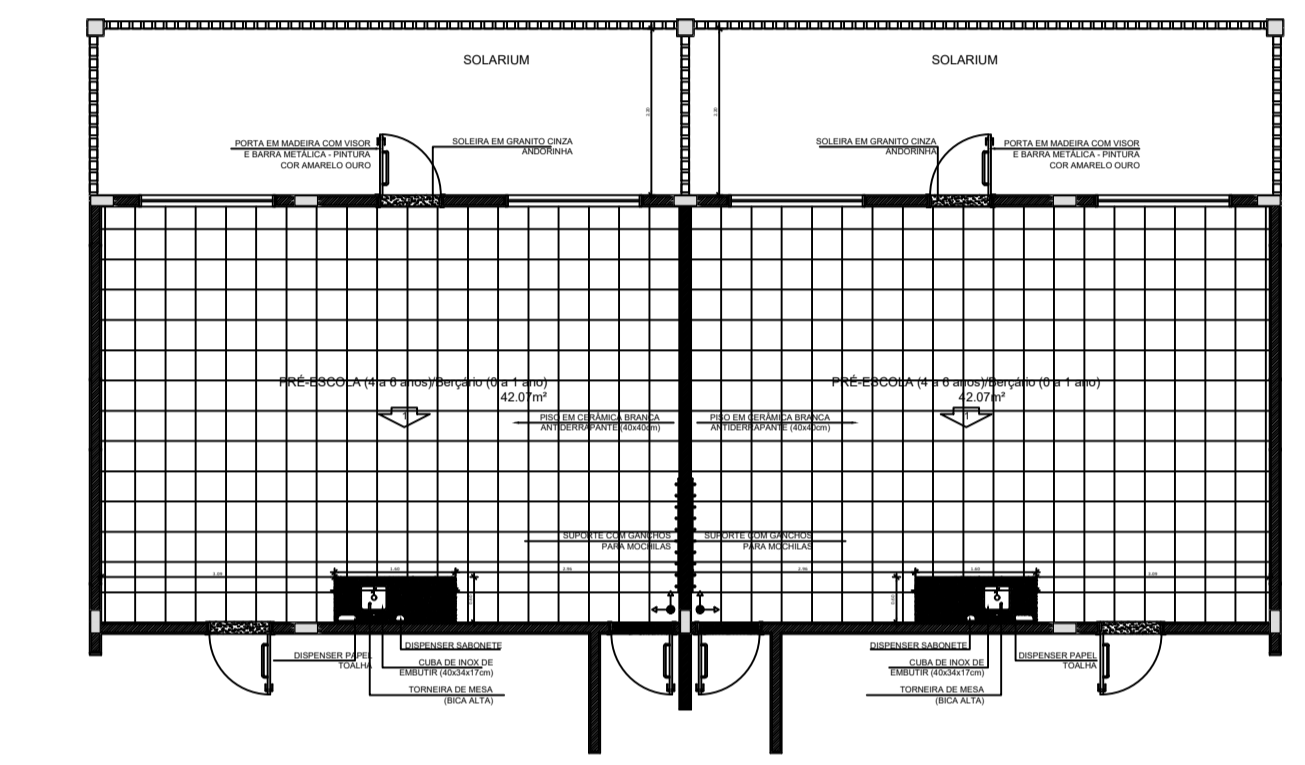
DETALHE 6
esc 1:50



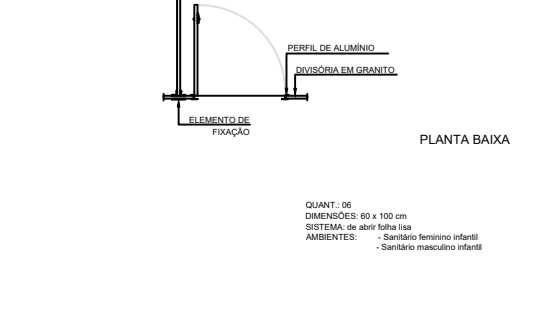
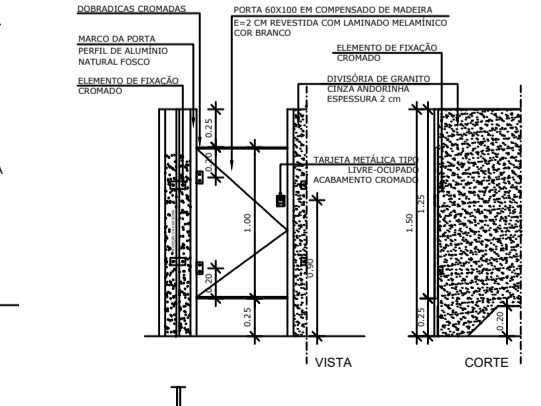
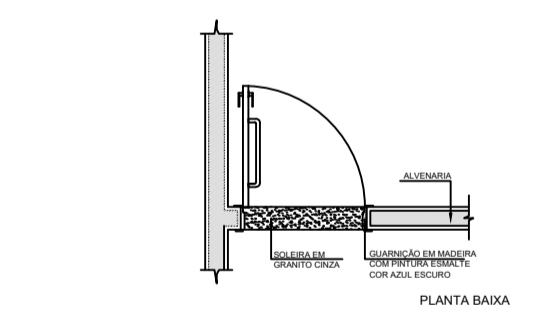
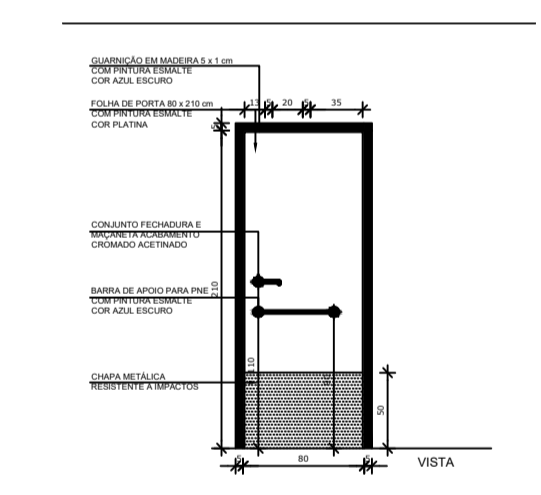
DETALHE ESQUADRIAS
esc 1:50



FACHADA
esc 1:75



DETALHE 8
esc 1:100



PROJETO: **CONSTRUÇÃO** FOLHA ÚNICA

CONTEM: PLANTA BAIXA - DETALHES - LOCAÇÃO - COBERTURA - FACHADA

LOCAL: Rua José Pedro Rezende, s/n

BAIRRO/LOTEAMENTO: Rezende

CIDADE: Bandeira do Sul/MG

LOTE: QUADRA: ZONEAMENTO:

DECLARO QUE A APROVAÇÃO DO PROJETO NÃO IMPLICA NO RECONHECIMENTO POR PARTE DA PREFEITURA DO DIREITO DE PROPRIEDADE DO TERRENO. O PROPRIETÁRIO SE OBRIGA A NÃO PERMITIR QUE AS ÁGUAS PLUVIAIS SEJAM LANÇADAS NA REDE DE ESGOTO.

Proprietário:
Prefeitura Municipal de Bandeira do Sul
Edervan Leandro de Freitas
Prefeito

ÁREAS:
LOTE: 5.200,56 m²
À AMPLIAR: 174,82 m²

Autor do projeto e R.T.
Wesley Eduardo Ramos Ishimoto
Engenheiro Civil
CREA 310.291/D MG

CARIMBOS:

A.R.T.: